

11 FLOOR PLANS OF RESIDENTIAL PROPERTIES IN THE DEVELOPMENT

發展項目的住宅物業的樓面平面圖

LEGEND OF TERMS AND ABBREVIATIONS USED ON THE FLOOR PLAN

樓面平面圖中所使用名詞及簡稱之圖例

A/C Platform = Air Conditioner Platform 冷氣機平台

A/C Platform ABOVE = Air Conditioner Platform Above 上層之冷氣機平台

A/C AREA = Air Conditioner Area 冷氣機區域

B. = Bathroom 浴室

BAL. = Balcony 露台

BAL. ABOVE = Balcony Above 上層之露台

B.R. = Bedroom 睡房

C.L = Cat Ladder 爬梯

COVER OF BAL. = Cover of Balcony 露台簷篷

COVER OF U.P. = Cover of Utility Platform 工作平台簷篷

DIN. = Dining Room 飯廳

DN = Down 落

E. M. C. = Electrical Meter Cabinet 電錶櫃

H/L = High Level 高處

H.R. = Hose Reel 消防喉轆

LIV. = Living Room 客廳

L/L = Low Level 低處

OPEN KIT. = Open Kitchen 開放式廚房

P.D. = Pipe Duct 管道槽

S.C. = Store Cabinet 儲物櫃

TEL. DUCT = Telephone Duct 電話槽

UP = 上

U.P. = Utility Platform 工作平台

U.P. ABOVE = Utility Platform Above 上層之工作平台

W.M.C = Water Meter Cabinet 水錶櫃

Notes applicable to the floor plans of this section :

1. The dimensions of the floor plans are all structural dimensions in millimeter.
2. Balcony and utility platform are non-enclosed areas.
3. There may be architectural features and/or exposed pipes on external walls of some of the floors. Please refer to the latest approved building plans for details.
4. Common drain pipes are located at external wall(s) adjacent to balcony and/or utility platform of some residential properties. Please refer to the latest approved building plans for details.
5. There are ceiling bulkheads or false ceiling in living room, dining room, bedrooms, corridor, bathroom and/or kitchen of some residential properties for pipes of the air-conditioning system or the water supply system. Please refer to the latest approved building plans for details.

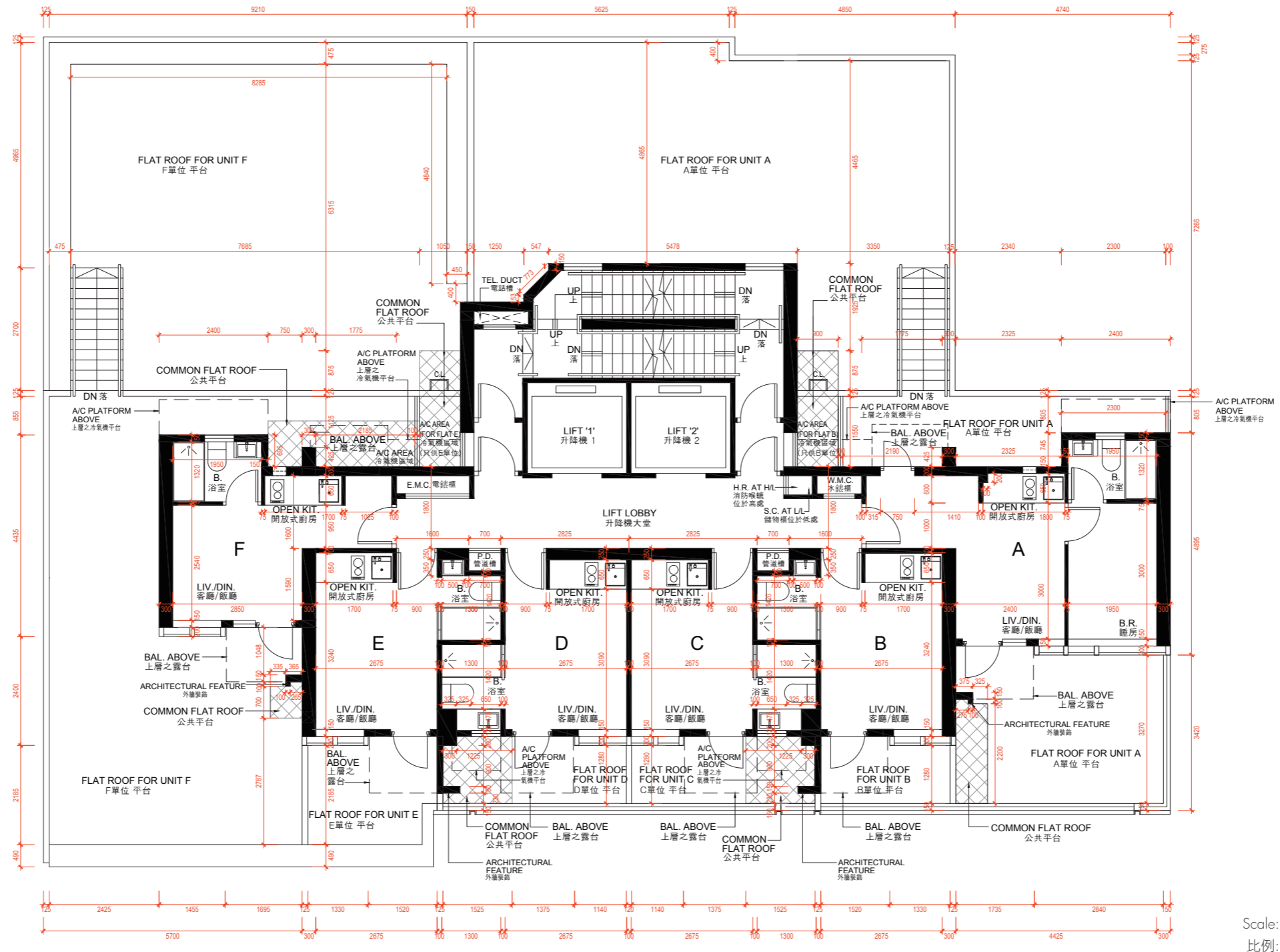
適用於本節各樓面平面圖之備註：

1. 樓面平面圖之尺寸所列數字以毫米標示之建築結構尺寸。
2. 露台及工作平台為不可封閉之地方。
3. 部份樓層外牆範圍設有建築裝飾及/或外露喉管。詳情請參考最新的經批准建築圖則。
4. 部份住宅物業的露台及/或工作平台側外牆有公用去水渠。詳情請參考最新的經批准建築圖則。
5. 部份住宅物業客廳、飯廳、睡房、走廊、浴室及/或廚房之裝飾橫樑或假天花內裝置冷氣喉管或供水喉管。詳情請參考最新的經批准建築圖則。

11 FLOOR PLANS OF RESIDENTIAL PROPERTIES IN THE DEVELOPMENT

發展項目的住宅物業的樓面平面圖

2/F FLOOR PLAN 二樓平面圖



Scale: 0M/米
比例: 5M/米

1. The floor-to-floor height of each residential property on 2/F of the Development as provided in the approved building plans for the Development is 3.15m.
2. The thickness of floor slabs (excluding plaster) in each residential property on 2/F of the Development is 150mm.
3. The internal areas of the residential properties on the upper floors will generally be slightly larger than those on the lower floors because of the reducing thickness of the structural walls on the upper floors.
4. There are sunken slabs for mechanical and electrical services and/or ceiling bulkheads for the air-condition fittings and/or mechanical and electrical services at some residential properties.

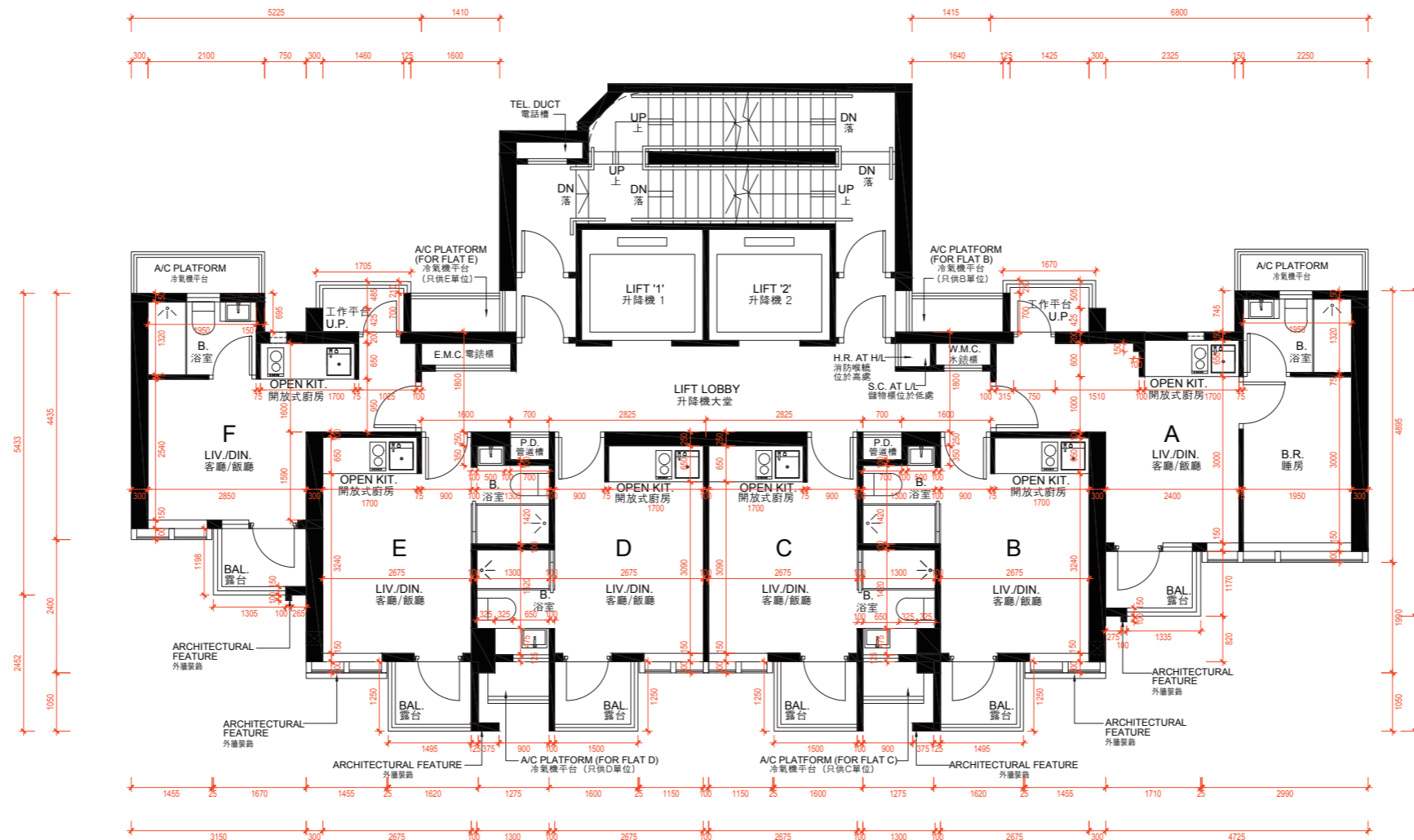
Notes :
Please refer to page 18 of this sales brochure for legend of terms and abbreviations shown in the floor plans.

1. 按發展項目的經批准的建築圖則所規定者，發展項目二樓每個住宅物業的層與層之間的高度為3.15米。
2. 按發展項目的經批准的建築圖則所規定者，發展項目二樓每個住宅物業的樓板(不包括灰泥)的厚度為150毫米。
3. 因住宅物業的較高樓層的結構牆的厚度遞減，較高樓層的內部面積，一般比較低樓層的內部面積稍大。
4. 部分住宅物業有用以安裝機電設備的跌級樓板及/或以安裝機電設備的假天花。

備註：
平面圖中所使用之名詞及簡稱請參閱本售樓說明書第18頁。

11 FLOOR PLANS OF RESIDENTIAL PROPERTIES IN THE DEVELOPMENT 發展項目的住宅物業的樓面平面圖

3/F, 5/F - 12/F, 15/F - 23/F, 25/F - 28/F FLOOR PLAN 三樓、五樓至十二樓、十五樓至二十三樓、二十五樓至二十八樓平面圖



Scale: 0M/米 5M/米
比例:

1. The floor-to-floor height of each residential property from on 3/F, 5/F to 12/F, 15/F to 23/F, 25/F to 28/F of the Development as provided in the approved building plans for the Development are 3.15m and 3.50m on 28/F.
2. The thickness of floor slabs (excluding plaster) in each residential property of the Development is 150mm.
3. The internal areas of the residential properties on the upper floors will generally be slightly larger than those on the lower floors because of the reducing thickness of the structural walls on the upper floors.
4. There are sunken slabs for mechanical and electrical services and/or ceiling bulkheads for the air-condition fittings and/or mechanical and electrical services at some residential properties.

Notes :
Please refer to page 18 of this sales brochure for legend of terms and abbreviations shown in the floor plans.

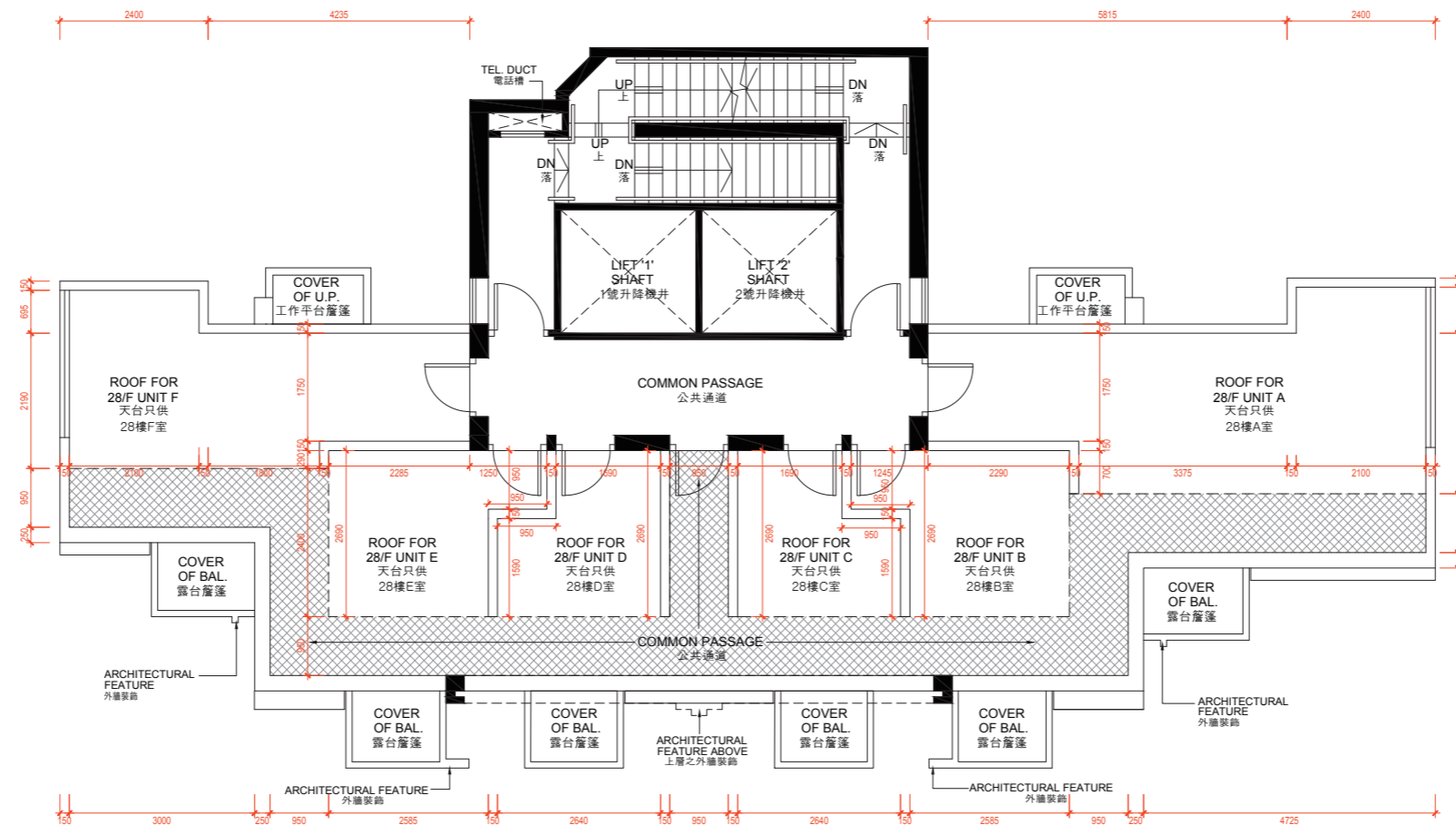
1. 按發展項目的經批准的建築圖則所規定者，發展項目三樓，五樓至十二樓，十五樓二十三樓，二十五樓至二十八樓每個住宅物業的層與層之間的高度分別為3.15米及二十八樓的為3.50米。
2. 按發展項目的經批准的建築圖則所規定者，發展項目每個住宅物業的樓板(不包括灰泥)的厚度為150毫米。
3. 因住宅物業的較高樓層的結構牆的厚度遞減，較高樓層的內部面積，一般比較低樓層的內部面積稍大。
4. 部分住宅物業有用以安裝機電設備的跌級樓板及/或以安裝機電設備的假天花。

備註:
平面圖中所使用之名詞及簡稱請參閱本售樓說明書第18頁。

11 FLOOR PLANS OF RESIDENTIAL PROPERTIES IN THE DEVELOPMENT

發展項目的住宅物業的樓面平面圖

ROOF FLOOR PLAN 天台平面圖



Scale: 0M/米 5M/米
比例:

Notes :
Please refer to page 18 of this sales brochure for legend of terms and abbreviations shown in the floor plans.

備註:
平面圖中所使用之名詞及簡稱請參閱本售樓說明書第18頁。